

## Skin Form

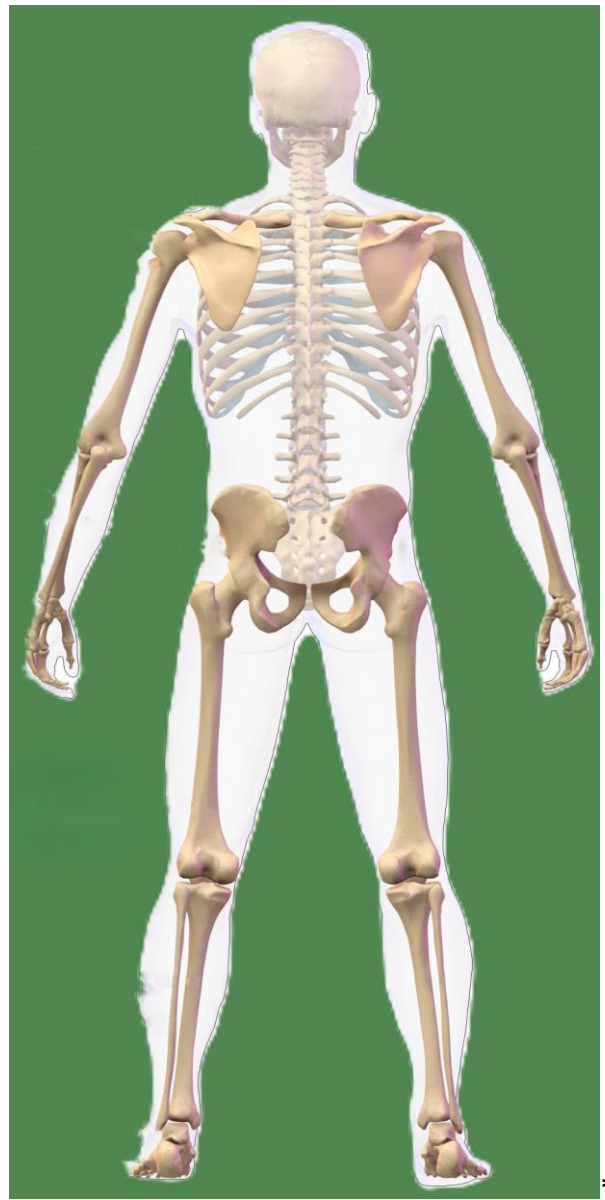
Please describe all your skin conditions, their diagnosis and location

What triggered it?

How has it changed?

How does it limit you?

Please indicate the areas affected:



**Previous treatments:**

<b>Character of the skin:</b> <ul style="list-style-type: none"><li><input type="radio"/> Dry</li><li><input type="radio"/> Itchy</li><li><input type="radio"/> Scaly</li><li><input type="radio"/> Greasy</li><li><input type="radio"/> Hairy</li><li><input type="radio"/> Irritated</li><li><input type="radio"/> Painful</li><li><input type="radio"/> Lumpy</li><li><input type="radio"/> Hard spots/lumps</li><li><input type="radio"/> Spots with pus</li></ul>	<ul style="list-style-type: none"><li><input type="radio"/> Swelling</li><li><input type="radio"/> Burning</li><li><input type="radio"/> Weeping</li><li><input type="radio"/> Numb</li><li><input type="radio"/> Scarred</li><li><input type="radio"/> Cracked</li><li><input type="radio"/> Ulcerated</li><li><input type="radio"/> Thickened like lichen</li><li><input type="radio"/> Crusty</li><li><input type="radio"/> Eroded</li></ul>
--	---

<b>Colour of the affected skin:</b> <ul style="list-style-type: none"><li><input type="radio"/> Red</li><li><input type="radio"/> Bright red</li><li><input type="radio"/> Mauve/purple</li><li><input type="radio"/> Bloody</li><li><input type="radio"/> Pale</li></ul>	<ul style="list-style-type: none"><li><input type="radio"/> White</li><li><input type="radio"/> Dull</li><li><input type="radio"/> Shiny</li><li><input type="radio"/> Yellow</li><li><input type="radio"/> Brown</li><li><input type="radio"/> Black</li></ul>
---	---

<b>Better for?</b> <ul style="list-style-type: none"><li><input type="radio"/> Warmth</li><li><input type="radio"/> Cold</li><li><input type="radio"/> Pressure/massage</li><li><input type="radio"/> Activity</li><li><input type="radio"/> Inactivity</li></ul>	<ul style="list-style-type: none"><li><input type="radio"/> Oily creams</li><li><input type="radio"/> Steroid creams</li><li><input type="radio"/> Dry weather</li><li><input type="radio"/> Time of year</li><li><input type="radio"/> Diet choices</li><li><input type="radio"/> Sleep</li></ul>
---	--

<b>Worse for?</b> <ul style="list-style-type: none"><li><input type="radio"/> Warmth</li><li><input type="radio"/> Cold</li><li><input type="radio"/> Pressure/massage</li><li><input type="radio"/> Stress</li><li><input type="radio"/> Activity</li><li><input type="radio"/> Inactivity</li></ul>	<ul style="list-style-type: none"><li><input type="radio"/> Oily creams</li><li><input type="radio"/> Steroid creams</li><li><input type="radio"/> Dry weather</li><li><input type="radio"/> Time of year</li><li><input type="radio"/> Diet choices</li><li><input type="radio"/> Exhaustion</li></ul>
---	---

<b>Discharges are generally:</b> <ul style="list-style-type: none"><li><input type="radio"/> Clear liquid</li><li><input type="radio"/> White</li><li><input type="radio"/> Yellow</li></ul>	<ul style="list-style-type: none"><li><input type="radio"/> Bloody</li><li><input type="radio"/> Black</li><li><input type="radio"/> Sticky</li><li><input type="radio"/> None</li></ul>
--	--

<b>Have you applied?</b> <ul style="list-style-type: none"><li><input type="radio"/> Hydrocortisone cream</li><li><input type="radio"/> Antibiotic cream</li><li><input type="radio"/> Emollients</li></ul>	<ul style="list-style-type: none"><li><input type="radio"/> Moisturisers</li><li><input type="radio"/> Acidic creams or gels</li><li><input type="radio"/> Coal-tar oils</li><li><input type="radio"/> Other medicated creams or gels</li></ul>
---	---

**Improvements:** how will you know if your skin is 25% better?